

The V6-Interface

The V6 interface is an NC-X format similar to the XML format, which you can generate using Notepad++. This means you can program a job without the profile and macro database. The profile and macro names, like the reference points for the macros, however, must be clarified in advance so that you can insert them correctly into the XML file.

Structure of a V6 interface

```
<?xml version="1.0" encoding="UTF-16"?>
<Job>
  <JidentNo>V6 Test</JidentNo>
  <info>V6 description</info>
  <info2>03/09/2010 12:23:19</info2>
  <info3></info3>
  <Bar>
    <BidentNo>VR60x40</BidentNo>
    <BLength>6000</BLength>
    <BWidth>40</BWidth>
    <BHeight>60</BHeight>
  <Cut>
    <CPartNo>1</CPartNo>
    <CCount>1</CCount>
    <CDescription>V6 Test</CDescription>
    <CComment></CComment>
    <CComNo>V6</CComNo>
    <CLength>1000</CLength>
    <CAngleLH>90</CAngleLH>
    <CAngleRH>90</CAngleRH>
    <CAngleLV>90</CAngleLV>
    <CAngleRV>90</CAngleRV>
    <Macro>
      <WMacroIdent>door hinge</WMacroIdent>
      <WSide>1</WSide>
      <Wtype>MACRO</Wtype>
      <Wcomment>left hinge</WComment>
      <WX1>100</WX1>
    </Macro>
    <Macro>
      <WMacroIdent>door hinge</WMacroIdent>
      <WSide>1</WSide>
      <Wtype>MACRO</Wtype>
      <Wcomment>right hinge</WComment>
      <WX1>CLength-100</WX1>
    </Macro>
  </Cut>
</Bar>
</Job>
```

In the example above, there is a job with the name "V6 Test". This job contains one profile (bar) with the profile number "VR60x40". This profile is added from the profile database. From this profile the cut is sawed, and it has a length of 1000 mm. The macro "door hinge" is added to this cut once at X100 and once at X900 from the top.

Description of terms

Job:

JIdentNo	Job number
Info	Job comment / description of the job

Bar profile:

BIdentNo	Profile number
BLength	Profile length
BWidth	Profile width
BHeight	Profile height

Cut:

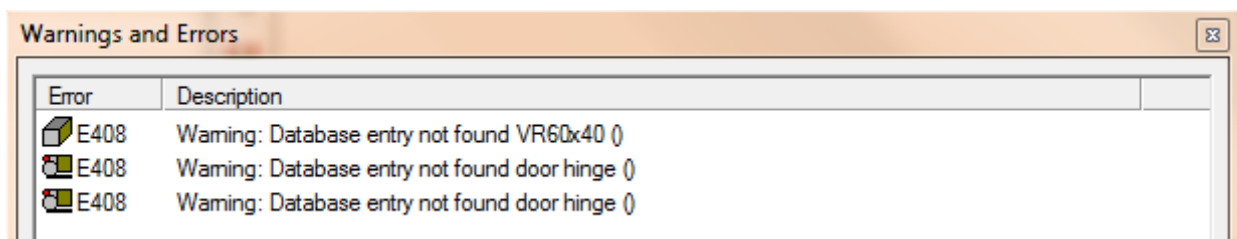
CCount	Cut quantity
CDescription	Cut comment / description of cut
CComment	Cut comment
CComNo	Commission
CPartNo	Part number
CLength	Cut length
CAngleLH	Pivot angle left
CAngleRH	Pivot angle right
CAngleLV	Tilt angle left
CAngleRV	Tilt angle right

Macro:

WMacroIdent	Macro name
WSide	Processing side
WType	Process type
WComment	Macro comment / description of macro
WX1	Insertion position of the macro on the X axis

Creating profiles and macros in eluCad

The profile and macro you enter in the XML format must be entered into the profile and macro database; otherwise, when the XML file is imported the following error message will appear:

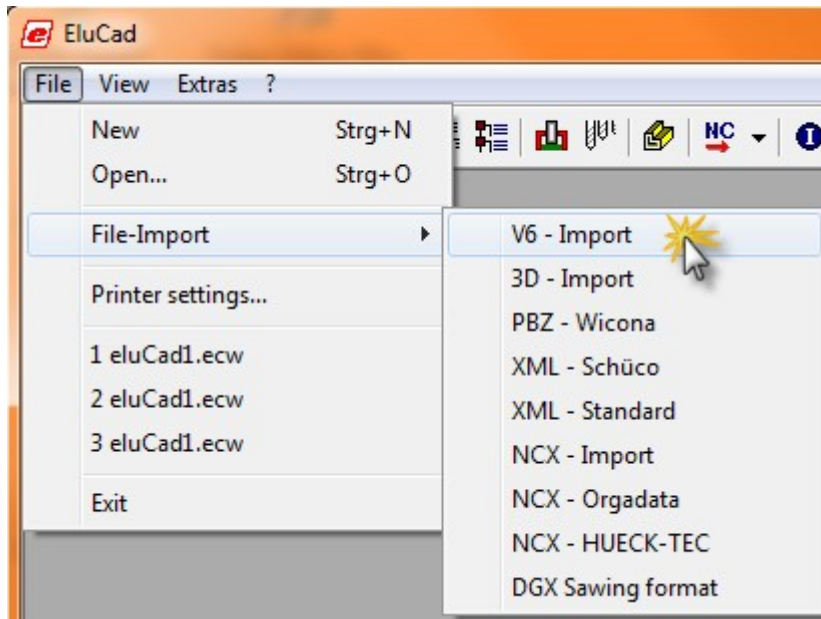


During creation, be sure that the profile and macro are named exactly as you specified in the XML file; otherwise, eluCad will not be able to assign the desired profile or macro .

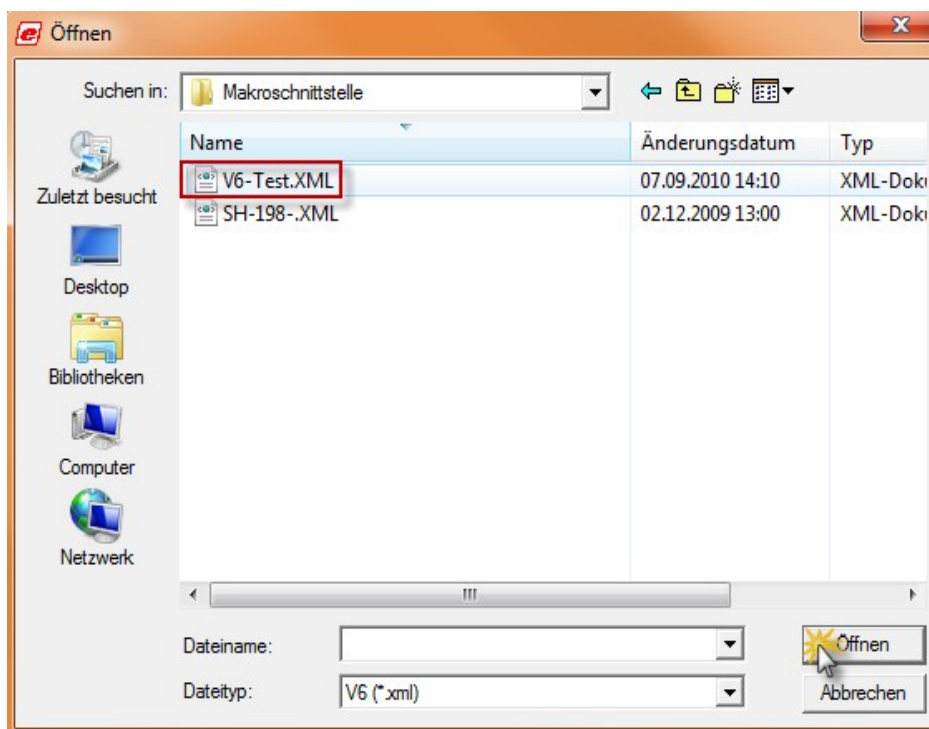
Importing into eluCad

Once you have created the profile and macro, you can import the XML file and generate the machine files.

Step 1: To import the XML file, first click "File", then move the mouse onto the field "File Import" and click "V6 Import".



Step 2: Select the XML file you want and click "Open".



The job now appears in eluCad with all its cuts and process steps and you can generate the machine files.

